

CHANGE YOUR **LUCK** WITH **MAGIC**

The best
**PSYCHIC
ADVICE**

chat[®] it's fate

July 2018 Issue 8 £2.10



GHOSTS
made us
MARRY



Darkness

TORMENTED
by my healing
CRYSTAL



I ESCAPED the fall of ATLANTIS

Real life
mermaid

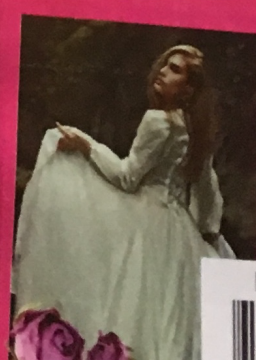


Stranded

OUR VAN
was **fixed**
by a
GOD

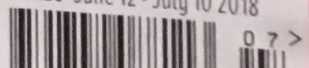


I summon
SATAN
to save
YOU



Bewitch
yourself
beautiful

R28 - June 12 - July 10 2018



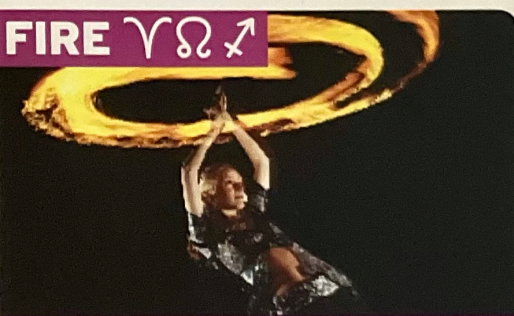
Exposed to the elements

Ever noticed an astrological pattern among your partners and friends? Do you get on well with some zodiac signs, while your relationships with others are more difficult and testing? It could all be down to your astrological element...

Check out your sign - Fire, Earth, Air or Water - and learn all about why you love the way you do

If you know somebody who doesn't fit into the elemental character descriptions below, this is because the element of their Sun sign is outweighed by a predominance of other key planets falling in a different element.
For instance, their Sun may be Fire, but their Moon, Mars and

Ascendant may all fall in Water signs. You'd need a full chart drawn up, which can be obtained free through many websites. Try www.astro.com, www.alabe.com, www.stariq.com and www.0800-horoscope.com. Or type 'free natal chart' or 'free birth chart' into a google search.



FIRE ♋♏♊

ARIES, LEO and SAGITTARIUS make up the three Fire signs. Think of a roaring fire, and that's the kind of impact a Fire sign person has. Bright, warm, dramatic, Fire people - like a blazing hearth - are usually the centre of attention. They light up a room, cheering and warming

those around them. Fire people have a playful quality and their optimism, imagination and spontaneity make them fun to be around. They're creative, energetic and are natural leaders, but can be subjective, unreliable and overly strong-willed or often insensitive in their enthusiastic drive to achieve.

FIRE AND FIRE

Imagine fire with fire. The result is one huge explosion. Phew! This is an energetic, dynamic combination, and can literally create fireworks. You'll be enthusiastic, optimistic and spontaneous - but try and avoid burning each other out!

FIRE AND EARTH

This isn't a natural, easy combination and requires some effort to make things work. If you're a Fire sign, you may be driven to distraction by your Earth partner's plodding, sensible ways - while Earth may find Fire's unpredictability and



EARTH ♉♊♋

TAURUS, VIRGO and CAPRICORN are Earth. Like the physical element itself, they're dependable, sensible and grounded. Just as earth provides a solid foundation in which things can grow and flourish, so Earth people have the practicality to achieve a lot. Earth people like financial

security and things they can touch, rather than emotions. They've a close affinity with nature and are sensual people who feel at home with their bodies and are good at nurturing themselves. However, Earth people may lack inspiration and creativity, and can be a bit inflexible and stubborn.

don't want all that exciting, unpredictable energy to blow out of control.

FIRE AND WATER

A fire's raging, so what do you do? Pour water on it to try and put it out.

That's one of the potential dangers of this combination. Water people - with their lack of natural optimism - can end up literally putting out a Fire person's fire, drowning their enthusiasm.

Equally, Fire people can end up making Water steam - and boil dry - with their insensitivity.

Take heart, though. Both

Fire and Water share a strong imaginative and unpredictable quality so this pairing can work really well.

EARTH AND EARTH

If you're Earth, pairing up with another Earth person can make for an easy, smooth-running relationship. You share their practical approach to life and appreciate their reliability and realism.

But you need to make sure there's enough excitement and spontaneity, too - it's all too easy for relationships between two Earth people to become a bit heavy.

We all need to fly sometimes!



AIR ♊♋♌

The three Air signs are GEMINI, LIBRA and AQUARIUS. Air is invisible and intangible - you can't touch it - and that's how it is with Air people. They aren't concerned with the physical stuff, but are more interested in thoughts and communication. Air people love to chat and debate. They're always open

to new ideas and are tolerant and objective. However, they've a tendency to be a bit detached - due to their need to rationalise everything - and may find it hard to trust their emotions or instinct. They may get lost in thought and neglect practical things - like eating and sleeping!

EARTH AND AIR

Although this isn't a naturally easy pairing, these two share much in common as both tend to think things through.

But Air signs tend to be more optimistic than Earth signs, who may find an Air person's changing ideas unrealistic. And if you're Air, you may find Earth rather predictable and dull.

Earth must try and understand Air's need for excitement - and Air must learn Earth's need to stay grounded!

EARTH AND WATER

Pour water on earth, and it sinks seamlessly into it. This is true of the natural quality of

relationships between Earth and Water people - they mix well.

Earth people can help ground any tendency a Water sign has to being irrational, while Water's sensitivity can help move Earth, bringing out their emotions.

The only thing you need to guard against is that this relationship doesn't end up too comfortable or soggy.

AIR AND AIR

Two Air people will understand each other's rational approach to life and this can be an intellectually stimulating and rewarding relationship.

The downside is that this pairing can result in so much



WATER ♋♏♊

CANCER, SCORPIO and PISCES belong to Water. Water flows and doesn't have a form of its own. Think of a glass or river - water takes the shape of its container, and likewise, Water people tend to be receptive and fit in with, or be influenced, by others. They're emotional and highly sensitive and aren't

concerned with facts. They've a intuitive quality and prefer to rely on their feelings. They often find it easier to express themselves with emotions rather than words. They're sympathetic and make great listeners. However, their intense emotional quality can make them irrational.

talking and analysing that the two of you go round in circles without actually getting much practical done.

Make sure you don't get lost in ideas - someone's got to cook, clean and pay the bills!

AIR AND WATER

If opposites attract, then that's definitely the case here.

Rational, logical Air people can find Water signs over-emotional, unreasonable and over-sensitive! And there you have the basic difference, with Water finding Air emotionally detached, cold and inconsistent.

Work at this pairing though, and you can learn a lot. Water

can teach Air to trust their gut feelings, while Air can show Water that a little bit of logic mixed in with all that intuition can give them more direction.

WATER AND WATER

Water people recognise the emotional drive and intuitive qualities of fellow Water signs - so this can be a smooth-running relationship. However, what happens if there is too much water? We drown. So two Water signs need to guard against drowning in a sea of emotion.

If all relationships were made up of this pairing, the world would run out of Kleenex!